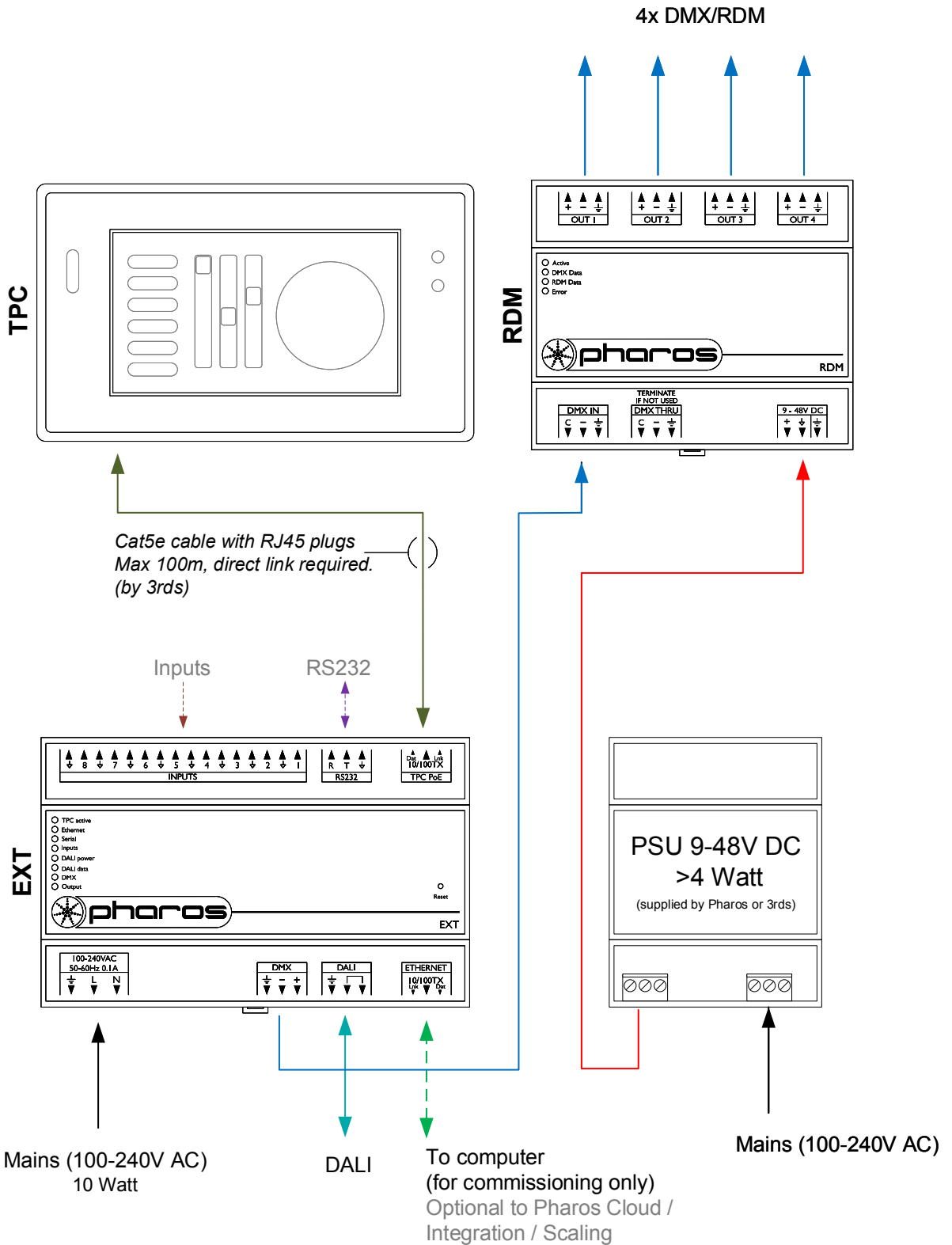


Type:	TPC + EXT
DMX	≤ 512 channels
eDMX	≤ 512 channels
Total	≤ 512 channels
DALI	1 DALI bus (max 64 devices)



- Consult the **Installation Guide** for technical details
- See **General Notes.pdf** for information on cabling types
- **More configurations** are possible to fulfil any project
- Contact your supplier or visit our website for support



pharoscontrols.com

Reference:
1302

Size:
A4

Page:

Name:
TPC - EXT - RDM

Date:	Rev:	Notes:
27/09/2017	V 1.0	Setup
17/09/2018	V 1.1	Minor adjustments
21/01/2019	V 1.2	Minor adjustments
27/05/2021	V 1.3	Minor adjustments